

Updated on 04/06/2025

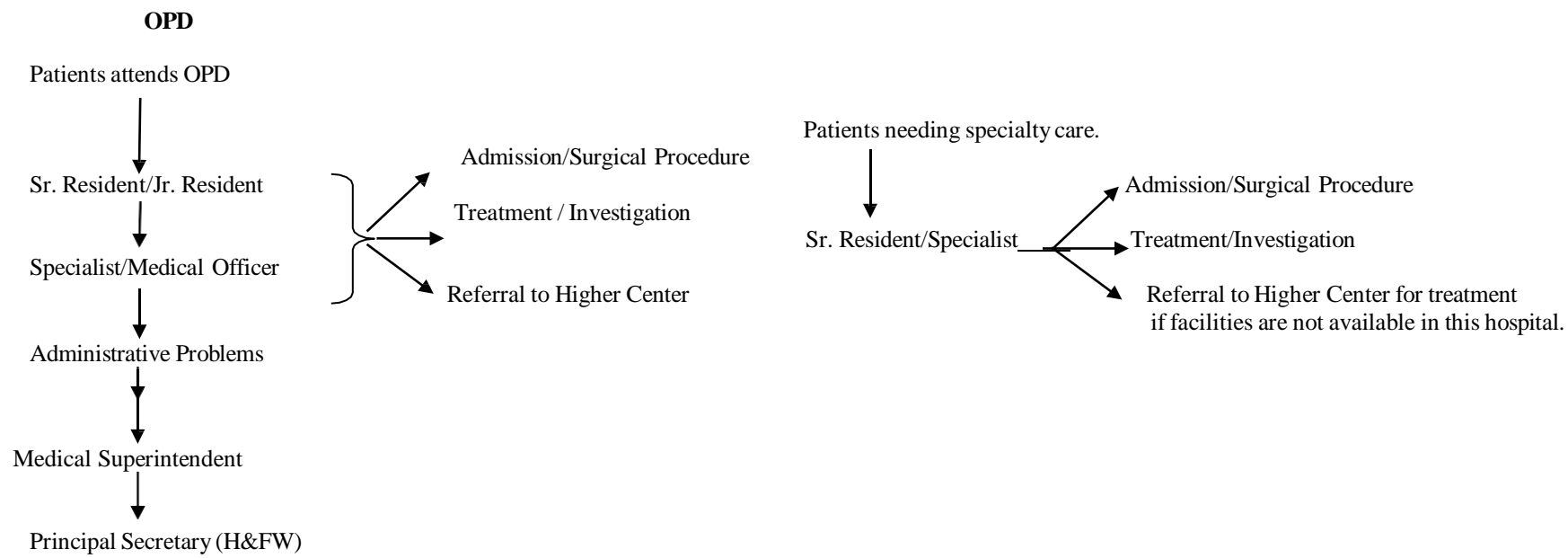
**MANUAL - 3**

**Procedures followed in decision making process**

**Section 4(1)(b)(iii)**

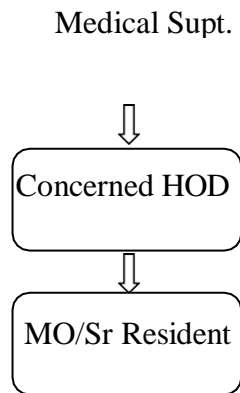
**Flow Chart of Attendance of Patient in OPD**

The procedure followed in the decision-making process including channels of supervision and accountability.

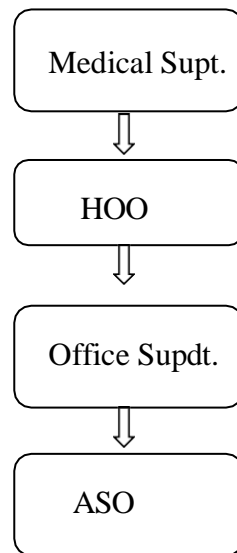


## Channel of Supervision and Accountability

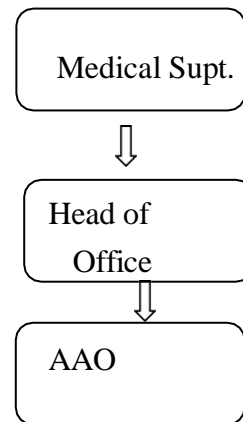
### Clinical



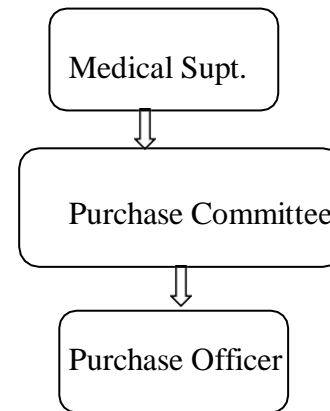
### Administration



### Accounts



### Purchase



### CT Branch

